

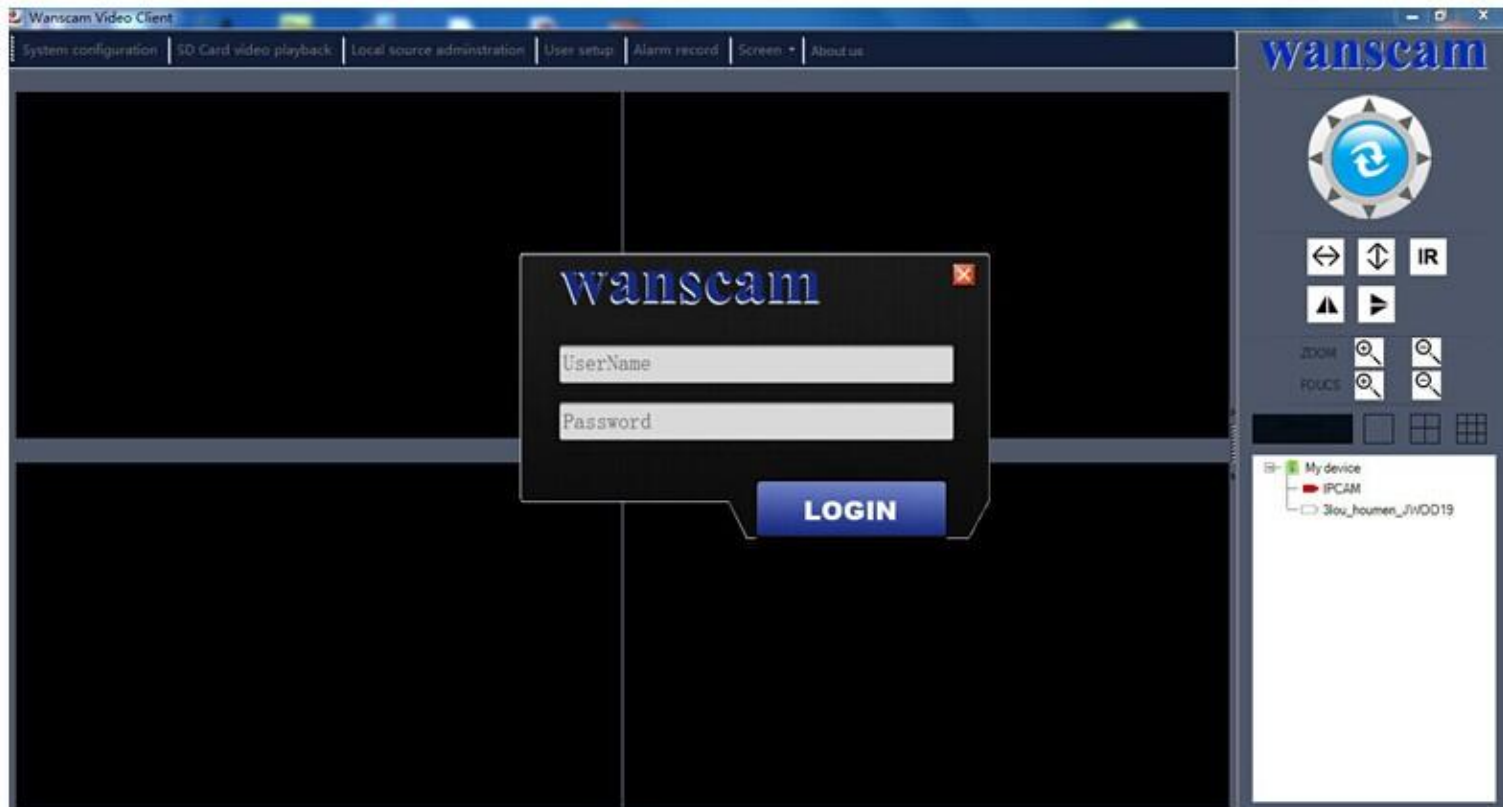
- Using the client software in LAN.



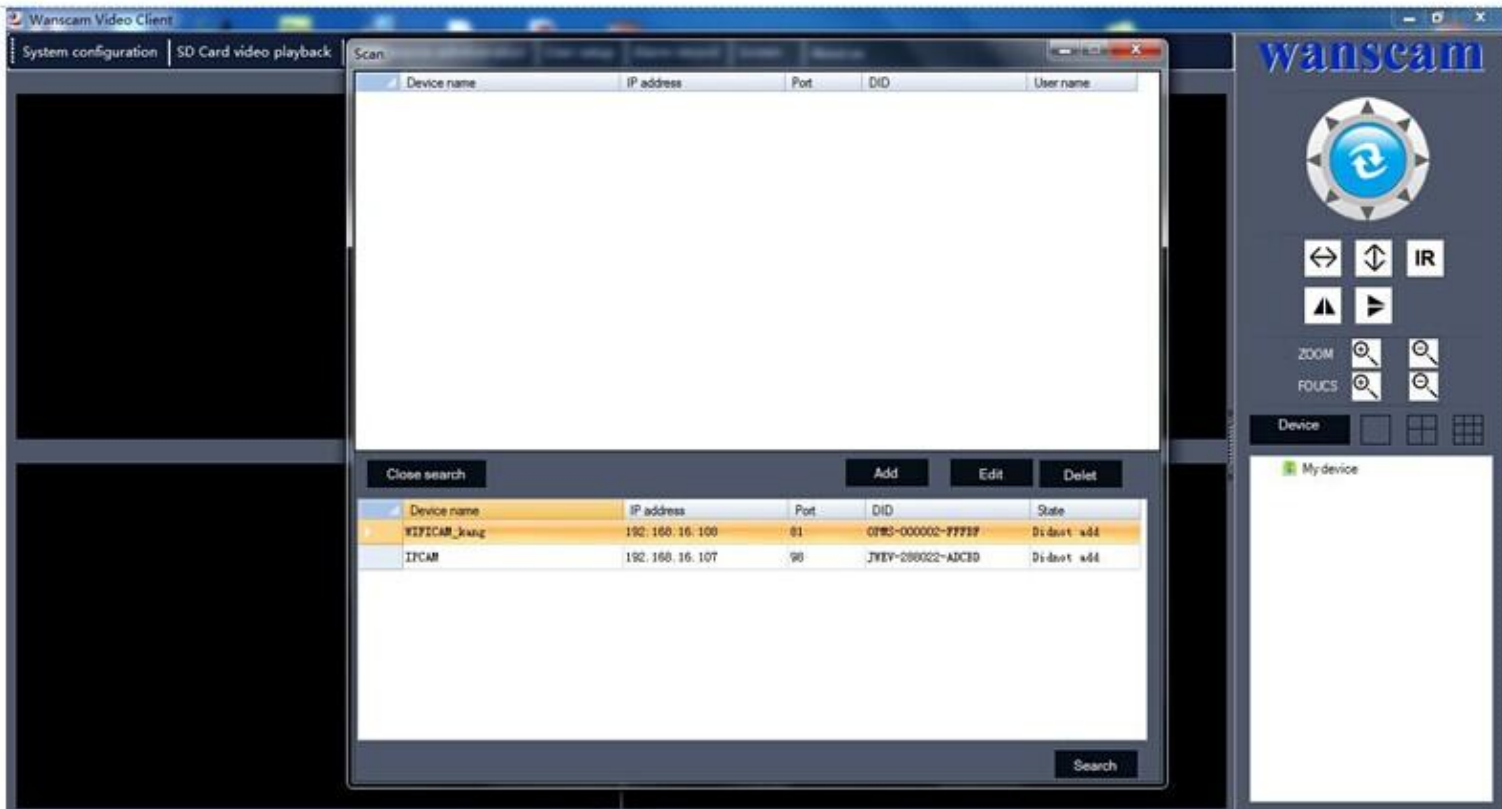
1. Find this file **wanscam.msi** in the CD, install it. After installation, you will find the icon **Wanscam** on your desktop.



2. Double click **Wanscam** to run the program, the following operation interface will be shown. both **User Name** and **Password** are **admin**



3. Firstly, click "Device", one window will pop up. Like following:



4. Then click "search" the cameras in LAN. You will see the camera device name ,IP address, port, and DID.

Wanscam Video Client

System configuration | SD Card video playback

Scan

| Device name | IP address | Port | DID | User name |
|-------------|------------|------|-----|-----------|
|-------------|------------|------|-----|-----------|

Close search Add Edit Delete

| Device name   | IP address     | Port | DID               | State       |
|---------------|----------------|------|-------------------|-------------|
| WIFICAM_kuang | 192.168.16.108 | 81   | 02MS-000002-FFFFF | Did not add |
| IPCAB         | 192.168.16.107 | 90   | JIVEY-288002-ASCB | Did not add |

Search

wanscam

IR

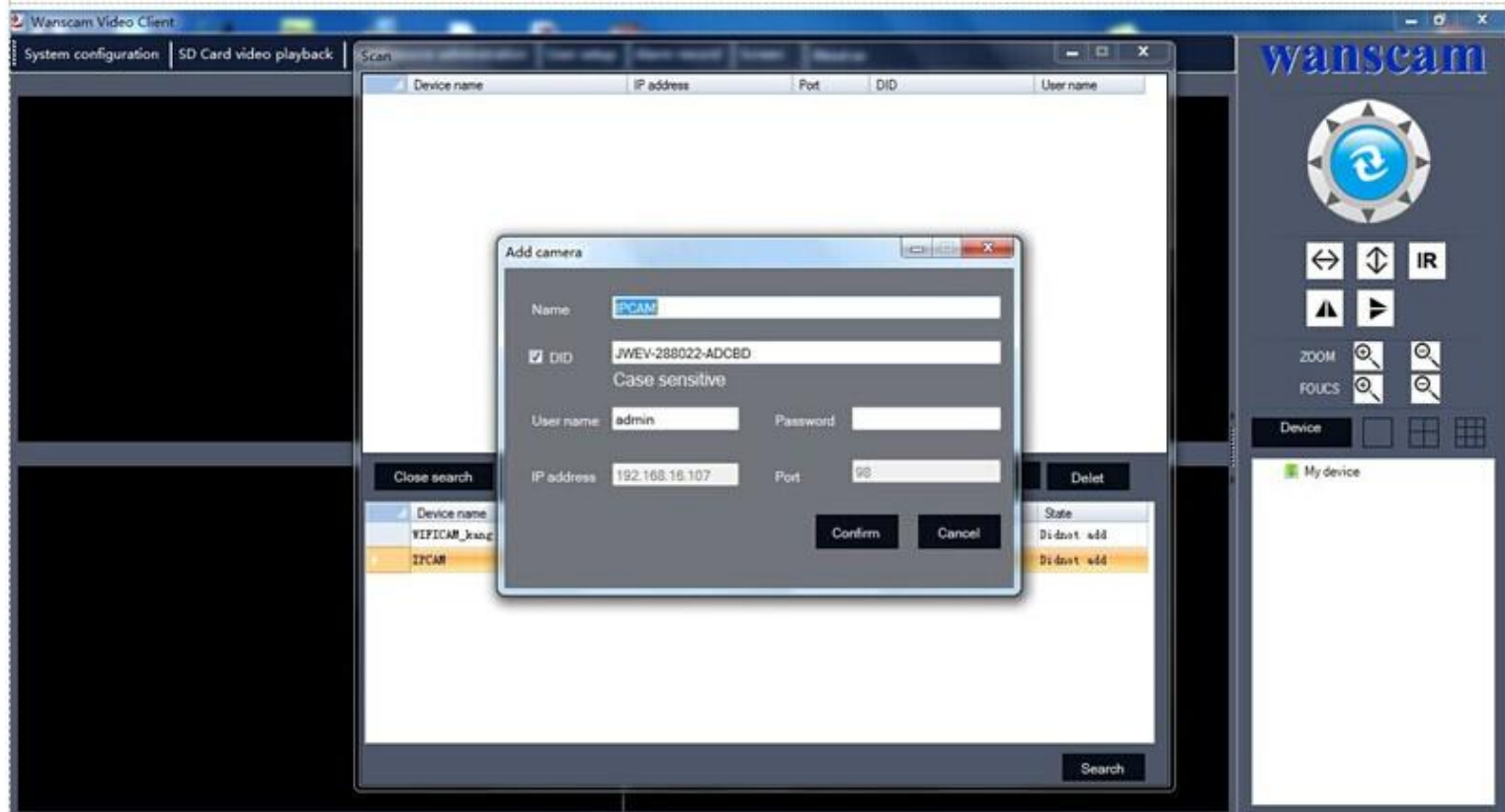
ZOOM

FOCUS

Device

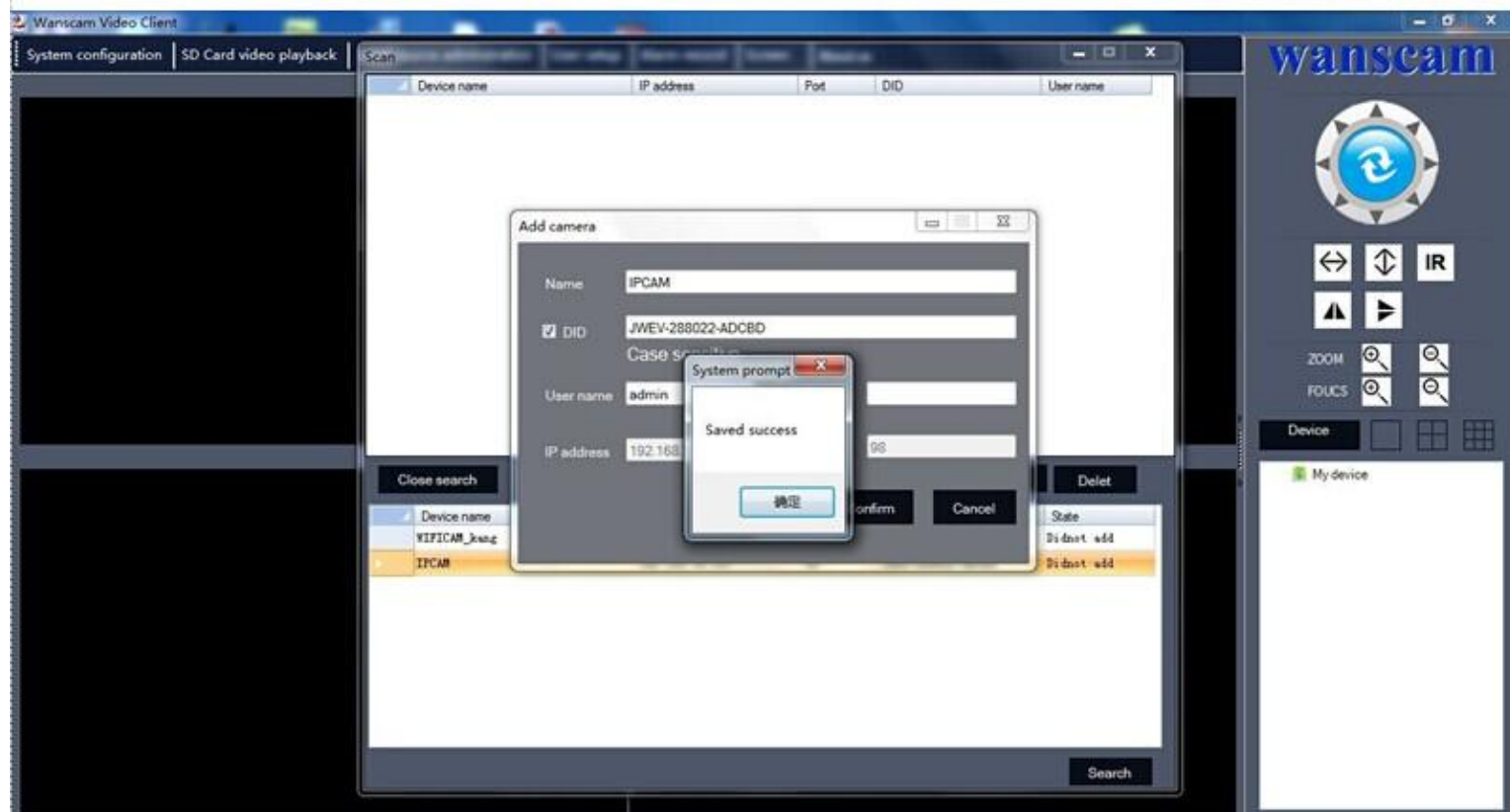
My device

5. Double click the camera IP address, a new window appears, input username and password, then confirm .

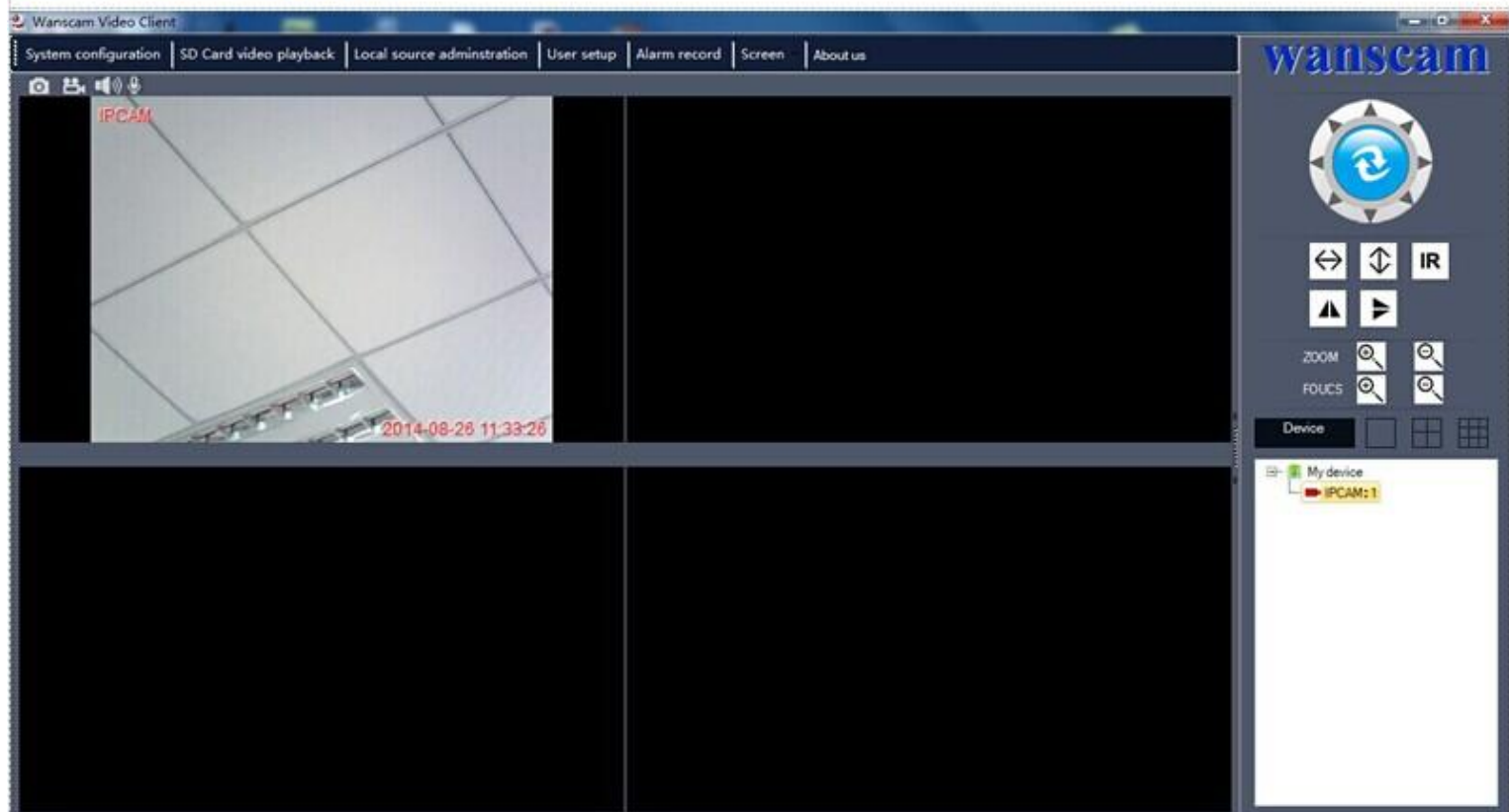


6. Click "sure", the camera which you just added will show in the device

list



7. At last close the window, click the right button of the camera or double click it to open the video, then comes the camera video, in the meantime, the exclamation mark turns to be red.



## The introduction of the operation interface .



Pan and tilt .



Auto tilt .



Auto pan.



IR control for night vision .



Image inverted.




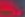

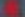
Mirror.



Zoom function.



Focus function.

    Snapshot\Record\Listen\Speak.

**System configuration** : Local storage \Auto running \ Others.

**SD card video playback** : Record the video settings.

**Local source administration**:All the cameras can be found and selected here .

**User setup** : Add \ Edit \Delete.

**Alarm record** : Alarm recording settings for all the cameras .

**Screen** : Multi-screen, see several cameras at the same time .

**Note** : Double clicking the screen,can enlarge the image.Double clicking again can go back.

And click the right button can go to the **set up** (DDNS, Alarm,Email,TP...)

**If you have problems, please feel free to contact us,**  
**support@wanscam.com**